

## BigAnt Messenger Quick Start

**Step 1. Download and install BigAnt console (the server program).**

Download link: <http://www.bigantsoft.com/download/bigant.zip>

\*The bigant.zip includes both BigAnt console program and client program.

**System requirements for BigAnt server.**

BigAnt Messenger supports MS Windows XP/2003/Vista/7. The following minimum system configuration is required:

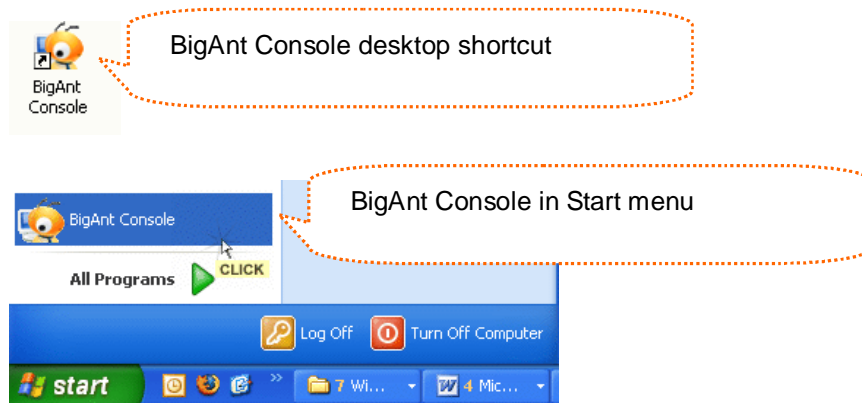
- CPU: P3 (physical double core or specialized server is recommended if you have over 100 on-line users)
- Free disk space: 500 MB or above
- RAM: 512MB ( or higher)

**Step 2. Install BigAnt console**

1) Double click to launch BigAntServer\_Enu.exe setup file.

2) Follow all instructions in the Setup Wizard.

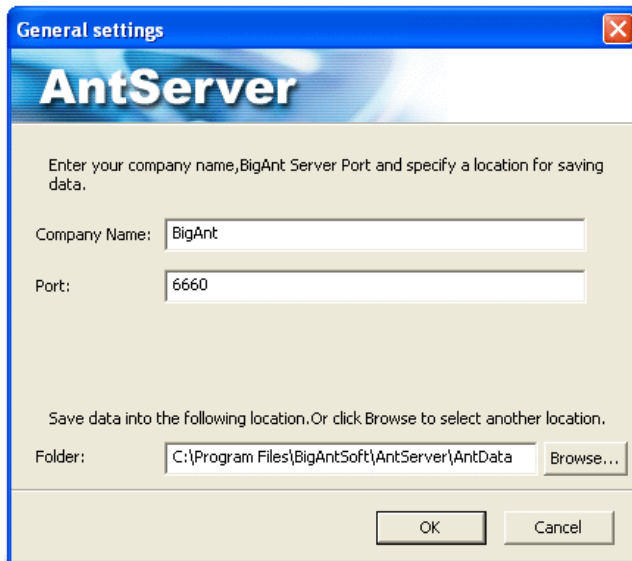
3) After installation you can launch BigAnt Messenger from **Start Menu -> Programs -> BigAnt Server-> BigAnt Console** or double click the BigAnt Console shortcut on desktop.



**Step 3. Launch BigAnt console and complete general configuration.**

There will be a welcome window as screenshot below. Click OK to skip the window.

1) Enter your company name or you can do this later, keep on click OK to continue



General settings

## AntServer

Enter your company name, BigAnt Server Port and specify a location for saving data.

Company Name:

Port:

Save data into the following location. Or click Browse to select another location.

Folder:

2) Choose a database from 2 available databases: Access and SQL database. You can use Access database by default.



Database settings

## AntServer

Please select a proper Database for data saving. Access Database and SQL Server Database are available. You may leave the option of Access Database as default.

Database type:

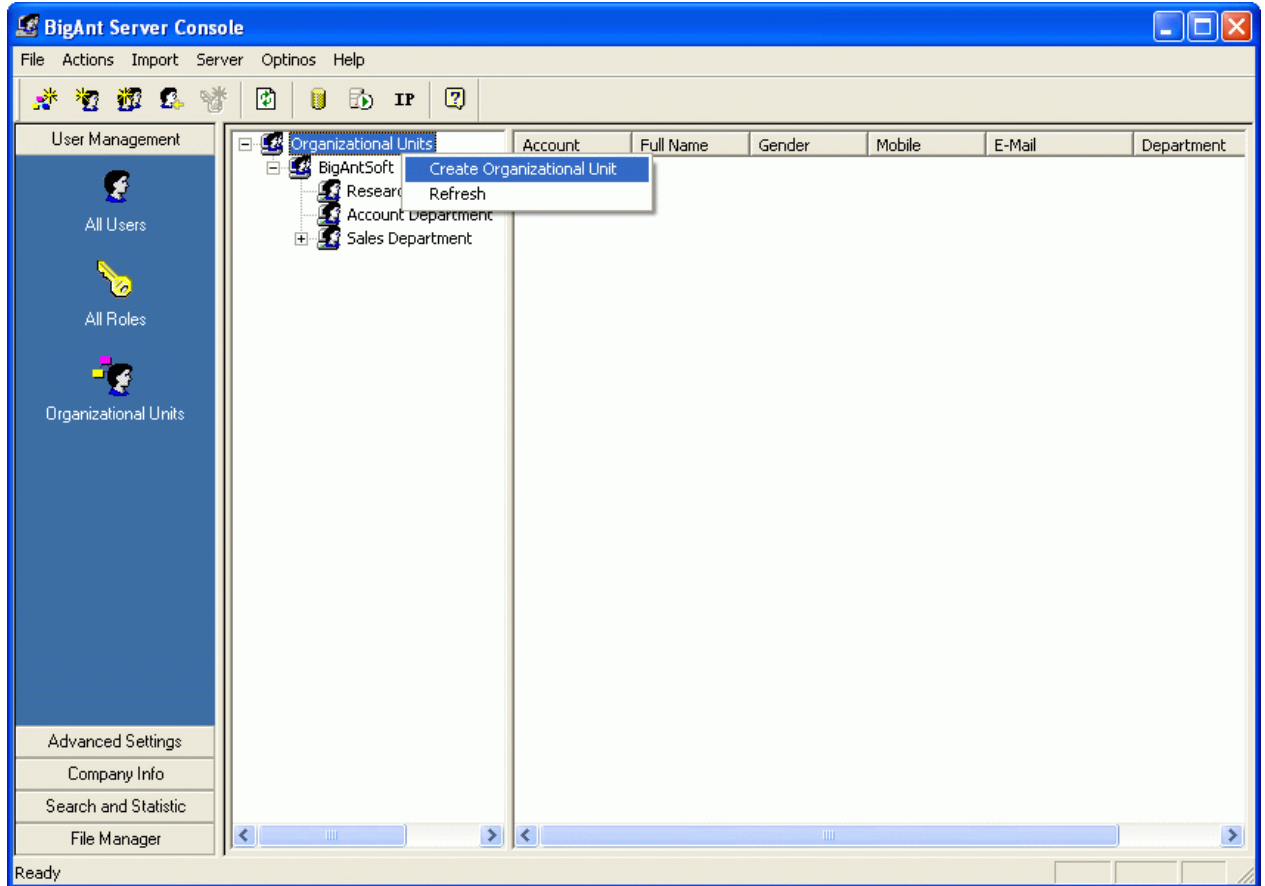
Access Database

SQL Server Database

 SQL server database is required to be installed on your server if you select this option.

#### Step 4. Create an Organization Unit and user

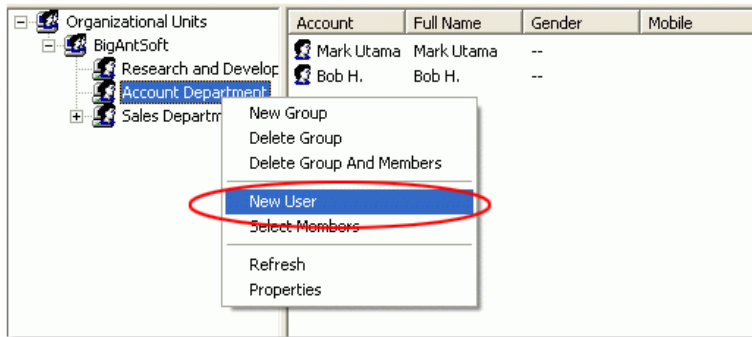
1) Select and right-click the default Organizational Unit item on the right pane, select Create a new Organizational Unit from the pop-up menu. Enter an OU name.



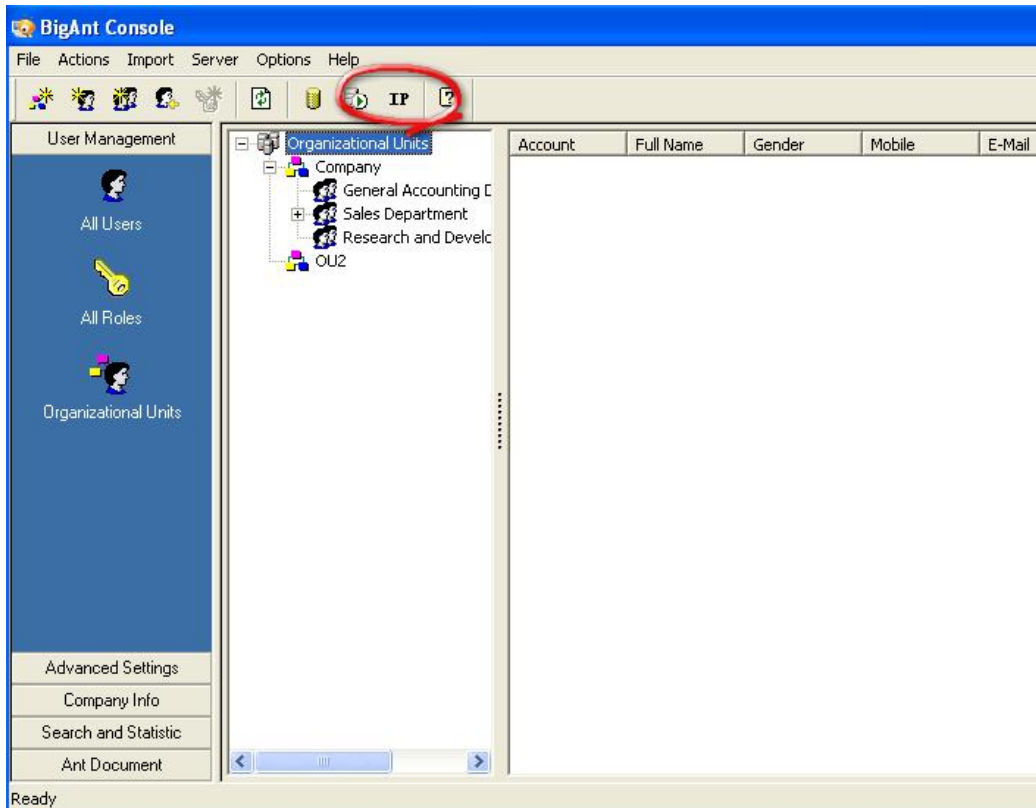
2) Create a new User Account on the server, right click an existing group and select New User from the pop-up menu or right click on the right blank space, select New User. Enter the user name and profile.

*\*The BigAnt IM client's user name and password are created by administrator on BigAnt server.*

*\* BigAnt supports Active directory.*



**Step 5. Get the server IP which will be used for IM client connect to IM server.**



*-For LAN user, click the IP button on BigAnt Console to show your server IP and deploy to all clients.*

*-For Internet user, please refer the article at <http://www.bigantsoft.com/blog/c0a20.html>  
If do not click go to website, please enter it in your internet explorer to view the full article.*

The following ports needs to be opened on server firewall or IP Filter to enable BigAnt Messenger work properly.

Service	Port (Default Value)	Description	Protocol
AntServer	6660	for instant messaging	TCP
AVServer	6662	for voice and video call	UDP
AntDS	6661	for document management	TCP

**Step 6. Double click to launch BigAntClient\_Enu.exe setup file.**

Follow all instructions in the Setup Wizard.

After installation you can launch BigAnt Messenger from Start Menu -> Programs -> BigAnt Messenger-> BigAnt Messenger or double click the BigAnt Messenger shortcut on desktop.

**Step 7. Connect BigAnt client to server.**

Launch BigAnt client, enter the server IP (See step 5 for the server IP), your logon name and password created by administrator on BigAnt console. Click Sign in button.

